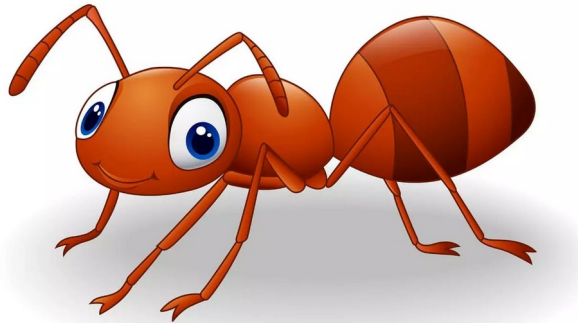


A a

B b

ANT



BEAR



C c

D d

CAT



DOG



E e

F f

ELEPHANT



FROG



G g

H h

GIRAFFE



HIPPO



I

i

J

j

IGUANA

JELLYFISH



K k

L l

KANGAROO

LADYBUG

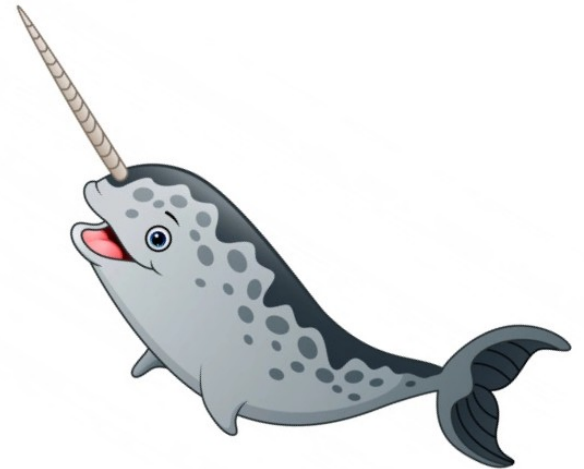


M m n N n

MOUSE



NARW



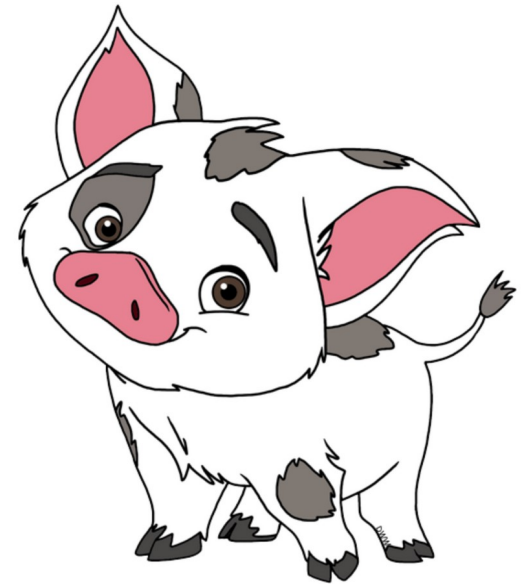
O o

P p

OWL



PIG



Q q R r

QUEEN



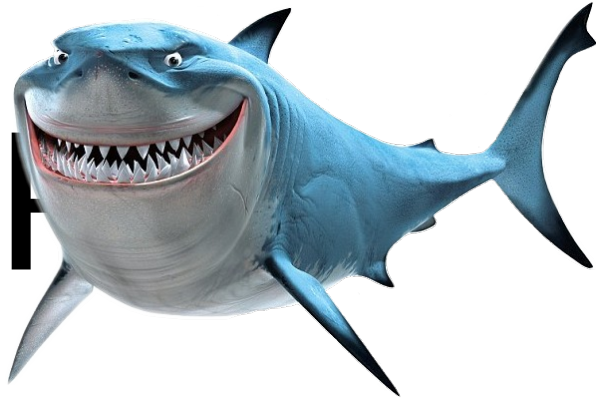
RABBI



S s

T t

SHARK



TIGER



U u

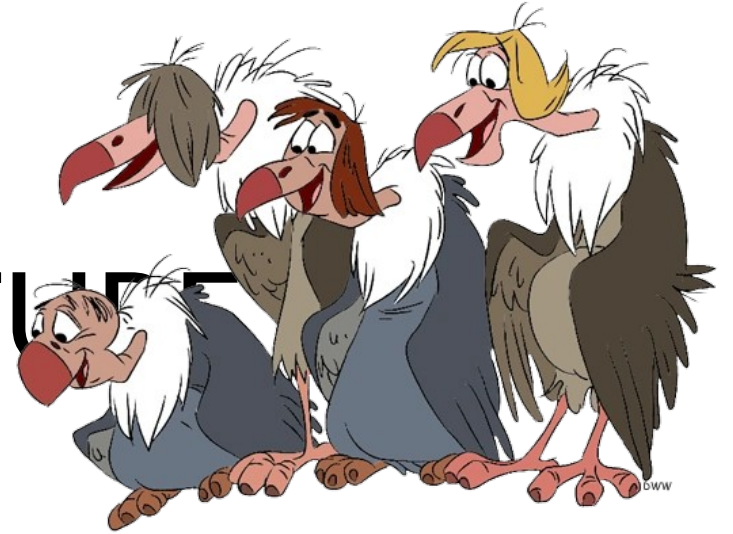
V v

UMBREL
BIRD



© 2009 Encyclopædia Britannica, Inc.

VULTURE



W w

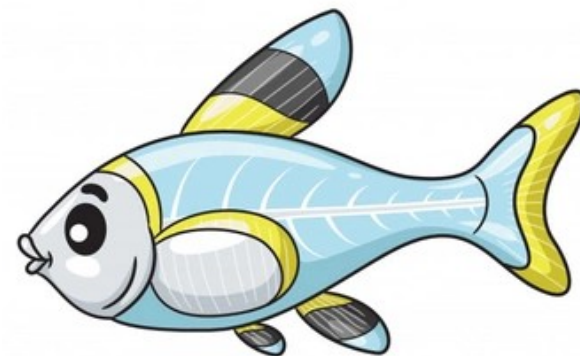
X x

wc



X-RAY

FISH



Y y

Z z

YAK



ZEBRA



